

Mach Schnell



Central Wisconsin Region – Porsche Club of America

Nov/Dec 2015

CWI-PCA Meeting, Kelly Moss

In November we held our monthly meeting at Kelly Moss Motorsports. If you missed it, you missed a lot. What a place to explore! We had a great time looking at all of the projects on the floor and listening to the stories of many of the cars in their shop. We saw several “stripped” shells of 911

ex- race cars that were being turned back into street legal vehicles. So many old 911’s were converted to race cars over the years, and now since the values have skyrocketed, many are being reborn for the street.



Kelly Moss has a very nice meeting room facility that they have offered to us for our meetings. We are considering having a couple of meeting there per year, just for something different. Stay tuned for more info next year.

Inside this issue:

CWI Calendar	1
Writers Block	2
Holiday Party	3
Marketplace	4

CWI-PCA Calendar

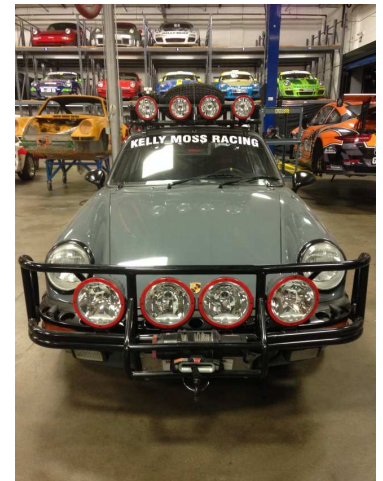
Jan 17 (Sun) CWI Holiday Party
Blackhawk Country Club

Feb 17 (Wed) 7:00 PM Monthly Meeting
Lees Automotive, Watts Rd.

Mar 16 (Wed) 7:00 PM Monthly Meeting
Lees Automotive, Watts Rd.

July ? We will have an event some evening in July at Sugar River Raceway in Brodhead. We'll be working out the date and let you know.

CWI Monthly meetings. Come join us for pizza and car talk!



Writers Block *Mach Schnell Editor, Chuck Schmeling*

It's been another good year. A couple of great tours and a few autocross events. I'm sure by now the cars are mostly tucked away for the winter...that still hasn't arrived. I put the 951 away three weeks ago just after the last CWI meeting at Kelly Moss and I've been thinking I should get it out this week if the roads dry off.

We will change things up a bit next year for our meetings. Lee's Automotive will still be "home base" but we will continue having a few of them at members homes as they volunteer, and potentially two of them will be at Kelly Moss Motorsports. We'll get the schedules out in the next newsletter and by e-mail as reminders.

Our holiday Party will again be at Blackhawk country Club. We've been there now for several years and I know, some may be getting a bit bored with the consistency. One good thing that has remained the same is that the food has been great and they have accommodated us with a very good value as food prices have continued to go up. Our sponsor at Blackhawk had moved out of the club and now owns a Corvette. Luckily, he still allows us to use his membership at Blackhawk for our party. We may want to be on the lookout for another venue if that situation changes. So far, they still want our business so, maybe we will be OK for a few more years. We are always open to ideas, just let me or Trevor (our unofficial Social Chair) know.

Until then, have a happy holidays and may the new year be good to you all.






**LEE'S
AUTOMOTIVE, LTD.**

Service and Parts For Porsche


6626 Watts Rd. LEE GRUNEWALD
Madison, WI 53719 608/271-4988



G-I OFFICE TECHNOLOGIES
YOUR DIGITAL PARTNER

Print - Reuse - Recycle

The Eco 306, worlds first printer-scanner-copier that erases toner and reuses paper.....time after time after time.



G-I Office Tech and Gregg Tipple
DrivingFanatic.com
Proud Supporters of CWI-PCA

gioffice.com
701 Atlas Avenue
Madison, Wisconsin 53714

CWI-PCA HOLIDAY PARTY

Sunday January 17 2016 - Blackhawk Country Club

11:45am for Cocktails - Lunch at 12:30pm

3606 Blackhawk Drive, Madison, 53705



Join fellow members and friends for our Annual Holiday Party

Excellent Fare, Great Company, Door Prizes and Free Raffle plus images from the year on the big screen

(Please bring your own CWI photos on a memory stick if you wish - else you will have to see just Chuck's and Trevor's!)

MENU

Craisin Berry Salad

*

Petite Filet or Italian Cheese Stuffed Chicken or Grilled Salmon with Pinot Noir reduction

Vegetable and Potato Dish of the Day

Glass of Chardonnay or Pinot Noir with entree

*

Chef's Choice Chocolate Dessert

CWI-PCA is absorbing the price increase from Blackhawk. PCA has been generous with their region rebates this year so we might as well pass along their generosity to out members. Happy Holidays!

Detach the form below and mail it to be received by Saturday Jan 9 latest to reserve your place(s)

Names: _____

Entre' choice:

Number: _____

Petite Filet

Number: _____

Italian Chicken

Number: _____

Grilled Salmon

Total persons: _____ @ \$37.00 (Inclusive of Tax and Tip) = \$ _____

Make checks payable to CWI-PCA and mail to:

Chuck Schmeling

3255 Kings Forest Ct

Sun Prairie, WI 53590

Please call 608 837 6155 or Email boxsters@yahoo.com if you have any questions

Is YOUR Email address current with Porsche Club of America?

CWI gets a member list from PCA monthly so if your Email address has changed please go on line to the PCA



Janice Joplin's Porsche 356 from the 2015 PCA Parade.



Marketplace

For Sale: 1977 924 : Runs well, well maintained (e.g., new timing belt), many years of maintenance records available, very clean, no rust, interior & exterior covers, sun roof, custom detailing, originally a California car, 4 owners, fancy Porsche wheels, some extra parts, stored winters. \$6000. Mileage: 54,000 miles, Exterior Color: Yellow. Interior Color: Black. Contact Paul at [608-233-2898](tel:608-233-2898) see

<http://www.flussigmagazine.com/17/post/2015/04/1977-porsche-924-usd6000.html#comments>



For Sale: Turbo calipers. Front 996 Turbo 'Reds'. Like-new paint and decals done professionally by Pcar. Includes a set of new Pagid Orange pads. \$500.

GreggT@DrivingFanatic.com


Wanted: 2007/2008 GT3. Low mileage (less than 20K), unmodified, no accidents, no track time. Prefer white but red or yellow will also work. Contact Jan Scott at 563-590-1464 or e-mail:

jan.scott@unisonsolutions.com.

For Sale: From 1997 993 C2S parts Engine undertray \$50. Stock OEM shift rod \$25. Console insert for cassette tape \$25. Removed from 996TT, KW variant 3 Coilover Kit. \$1400. Jeff Ryan 608-442-7860 campryan@aol.com

For Sale: Cayenne Design 19 inch wheels (silver) with painted crest. Snow tires mounted, may be good for only one season. \$400.00 . Contact Dave at 262-930-7791

Facebook: [Porsche Club of America - Central Wisconsin Region](#)

Central Wisconsin Region - Porsche Club of America		
PRESIDENT Charles Holstein 775 Boulder Ridge Dr Belvidere, IL 61008 cenauburn@aol.com	SECRETARY Lee Grunwald 2202 Montary Dr. Madison, WI 53704 608-271-4968	Web site: cwi.pca.org
VICE PRESIDENT Brendon Schallert 1117 Velvet Leaf Drive Madison, WI 53719 608-513-1836 brendon.s@charter.net	COMPETITION & SAFETY Fred Howard 12534 Thistle Ridge Ct. Roscoe, IL 61073 815-389-1966 flyingwedgeracing@charter.net	
TREASURER Chuck Schmelling 3255 Kings Forest Ct. Sun Prairie, WI 53590 608-837-6144 boxsters@yahoo.com	NEWSLETTER Chuck Schmelling 3255 Kings Forest Ct. Sun Prairie, WI 53590 608-837-6144 boxsters@yahoo.com	
MEMBERSHIP Lee Grunwald 2202 Montary Dr. Madison, WI 53704 608-271-4968	SOCIAL	
E-mail: cwi.pca@gmail.com		
ADVERTISING RATES: Business Card: \$30/yr. 1/4 Page: \$55/yr. 1/2 Page: \$85/yr. Full Page: \$125/yr. One year consists of six issues. MARKETPLACE ads free to PCA members for personal use.		
<small>Mach Schnell is the official publication of Central Wisconsin Region - Porsche Club of America, Inc. It is published bi-monthly on the first of Jan., Mar., May., July., Sept., and Nov. Statement and opinions appearing in this publication are those of the author and do not represent the official position of Central Wisconsin Region, Porsche Club of America, its officers or other members. Permission for other PCA regions to reprint any material is granted, provided materials are not copyrighted, and credit is given to the author, region, and Mach Schnell. Articles or ads are to be submitted to the Newsletter editor by the 15th of the month preceding publication. The editor reserves the right to edit all material submitted for publication. CWI-PCA is not responsible for any services or merchandise advertised herein.</small>		